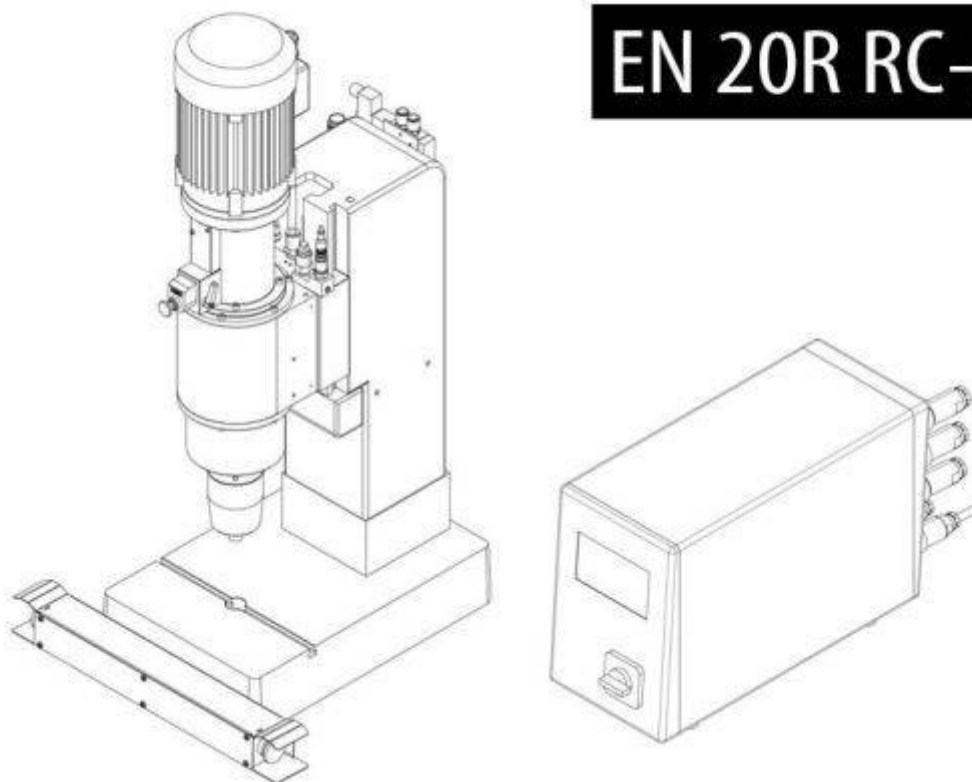


EN 20R RC-30



Data sheet EN-20R-010

Orbital Bench Top Riveting Machine

Rivet shank Ø: up to 7 mm | Force: up to 9.50 kN | Stroke: up to 40 mm

BalTec

Key features | Content of delivery

Forming process: Orbital

Standard Version

REDUCED FORCE

- Nominal force 9.5 kN @ 6 bar (max. operating pressure)
 - Rivet shaft up to Ø 7.5 mm (Steel 370 N/mm²)
 - Spindle stroke 5 - 40 mm with 0.01mm micrometer scale and mechanical stroke limit
 - Machine weight: approx. 220 kg
 - Electro-pneumatic drive – power supply @x@V, @Hz
 - Permanently lubricated spindle
 - head angle 5° for tool length Ls= 84 mm, free height 28 mm
- or
- head angle 3° for tool length Ls= 116 mm, free height 60 mm (specify when ordering)
 - BFR-RN-281, Column, incl. height adjustment and table
 - Color: light grey RAL 7035

Including

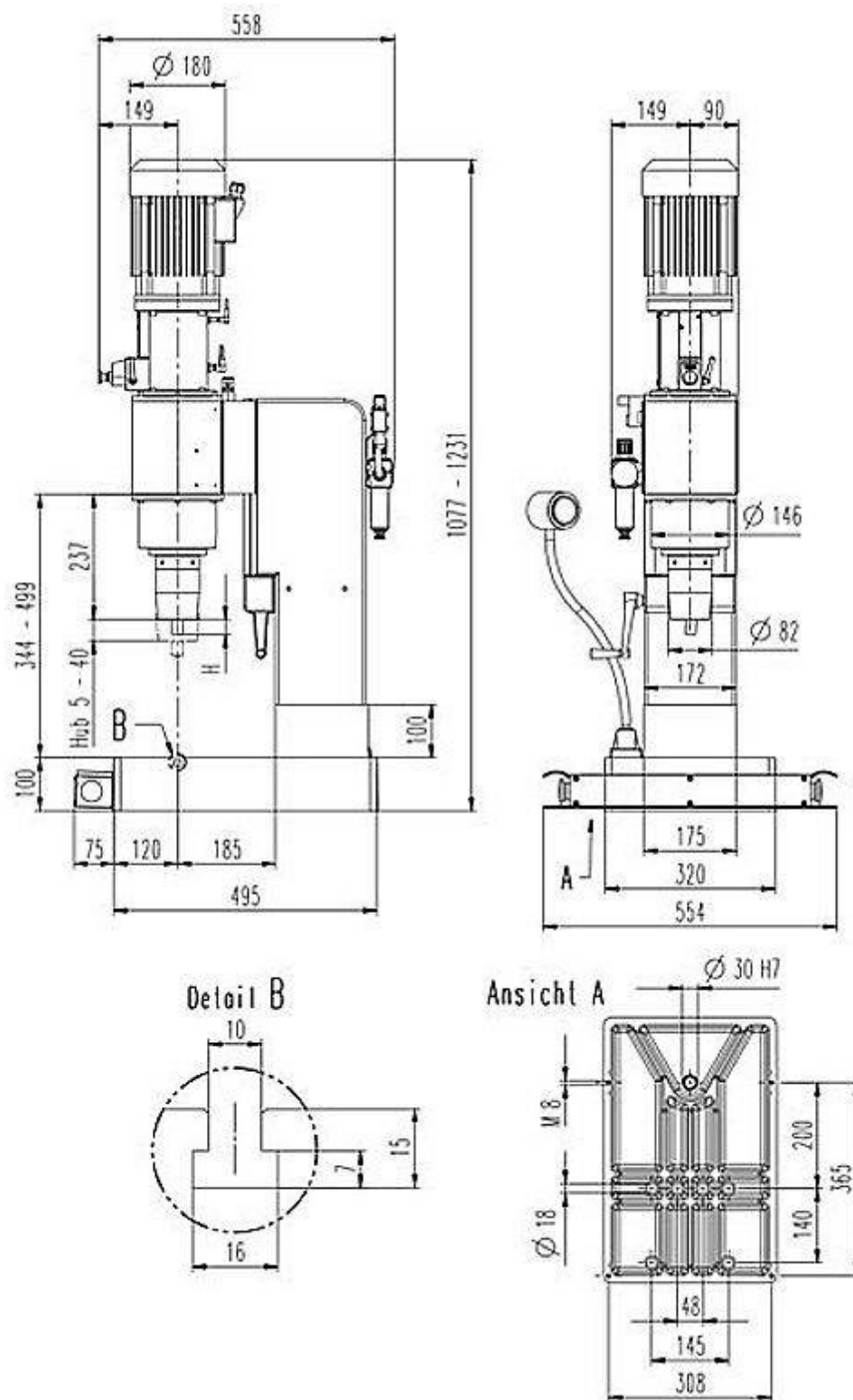
- FN-RC3-02, RC-30 Time Based Control for 2-hand start button, connections X1, X2, X3, X20, X21
- RC3-X4-01, Connection X4, incl. two-hand relays, for Emergency-Stop and two-hand control
- FN-010, two-hand control
- FN-042, Sensor upper spindle position (TDC)
- FN-034, Pneumatics EN/E without oiler
- Standard accessories and user manual in the language of destination

Options

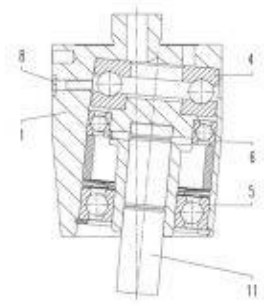
- FN-RC3-01, RC-30 Time Based Control, connections X1, X2, X3, X20, X21
- RC3-X5-01, Connection X5, incl. PVM Module
- RC3-X6-01, Connection X6, external safety / Reset
- FN-033, Oiler for pneumatics
- FN-015, Emergency stop (push button)
- FN-014, Cycle take over sensor
- FN-201, Adjustable task light, 24 VDC, LED

Subject to change.

Drawing



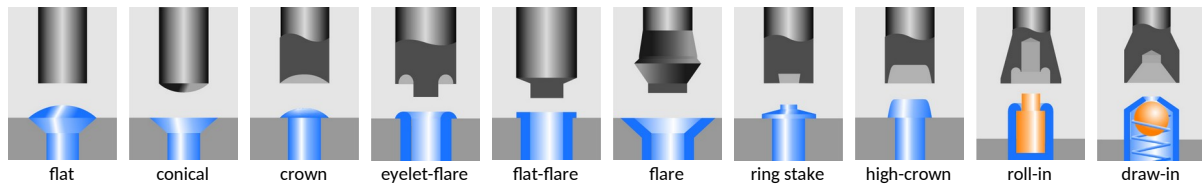
Forming tool lengths



Radius mm Rp	Tool length mm Ls	Free height mm H	Shank Ø mm Ds	Angle of inclination α
84.00	28.00		10	5°
116.00	60.00		10	3°



Our engineers are routinely meeting the demands of complex design problems. Having the specific tools needed for your metal forming project can mean the difference between success and failure. Contact us with your unique application for custom tooling.



Industries & Applications



BalTec AG
Switzerland / Germany

BalTec (UK) Ltd.
United Kingdom

BalTec France
France

BalTec Corporation
USA / Canada / Mexico

BalTec do Brasil
Brazil

BalTec Machinery (Shanghai) Ltd.
China

BalTec Italia Srl
Italia

BalTec